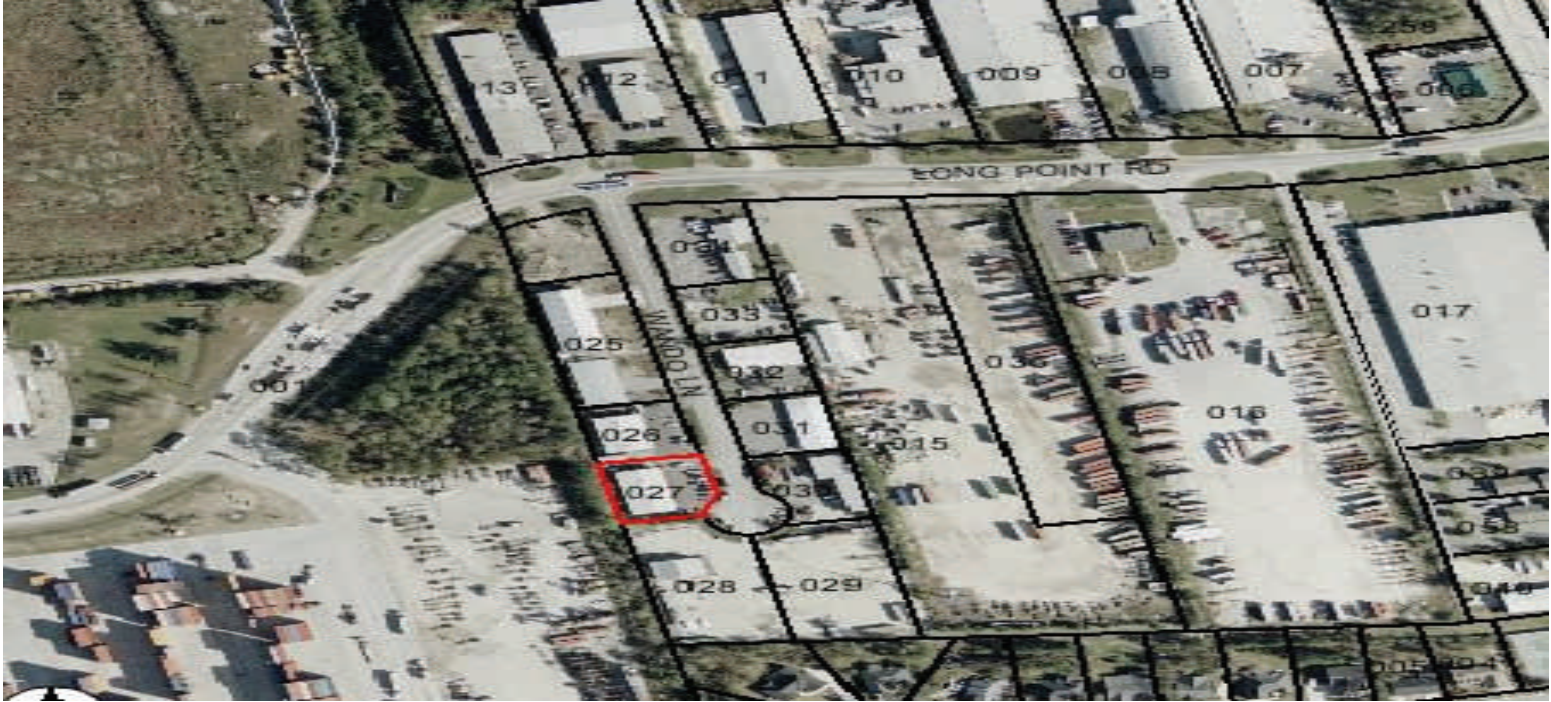


REAL ESTATE

new on the market.



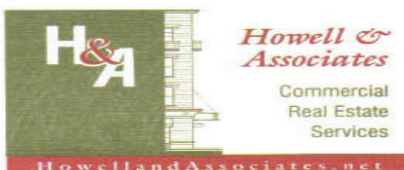
MLS #2813156

527 B Wando Lane Mt. Pleasant, SC 29464

- +/- 3,000 sq. ft. of Office with large undivided space and 4 individual offices
- Easy access to I-526 and Long Point Rd.
- TMS # 537-00-00-027
- Contact John Elliott for more information (843) 884-8976 or (843) 830-3272
- Available Space: +/- 3,000 sq ft
- Lease Rate: \$16.00 p/s/f
- Least Term: Negotiable
- Zoning: Office
- Utilities: All Available

Directions:

Exit I-526 at Long Point Road and travel South—Wando Lane is the last street before entering the port gate.



Commercial and Investment Real Estate
242 Mathis Ferry Road, Suite 200 Mt. Pleasant, SC 29464
(843) 884-8976 (843) 884-0177
www.howellandassociates.net