

REAL ESTATE

new on the market.



MLS #2827733

5630 W. Boland Cir. North Charleston, SC 29406

- **Excellent visibility from I-26 at Remount Road exit, located on a frontage road.**
- **Easy Access to I-26, I-526, Hwy 52, Remount Rd. and Airport.**
- **TMS # 472-07-00-015**
- **Contact John Elliott for more information**
- **Available Space: .17 acres with 1,087 sq ft building**
- **Sales Price: \$250,000**
- **Zoning: B- 2, MUNI**
- **Utilities: All Available**
- **Perfect spot for maximum visibility**

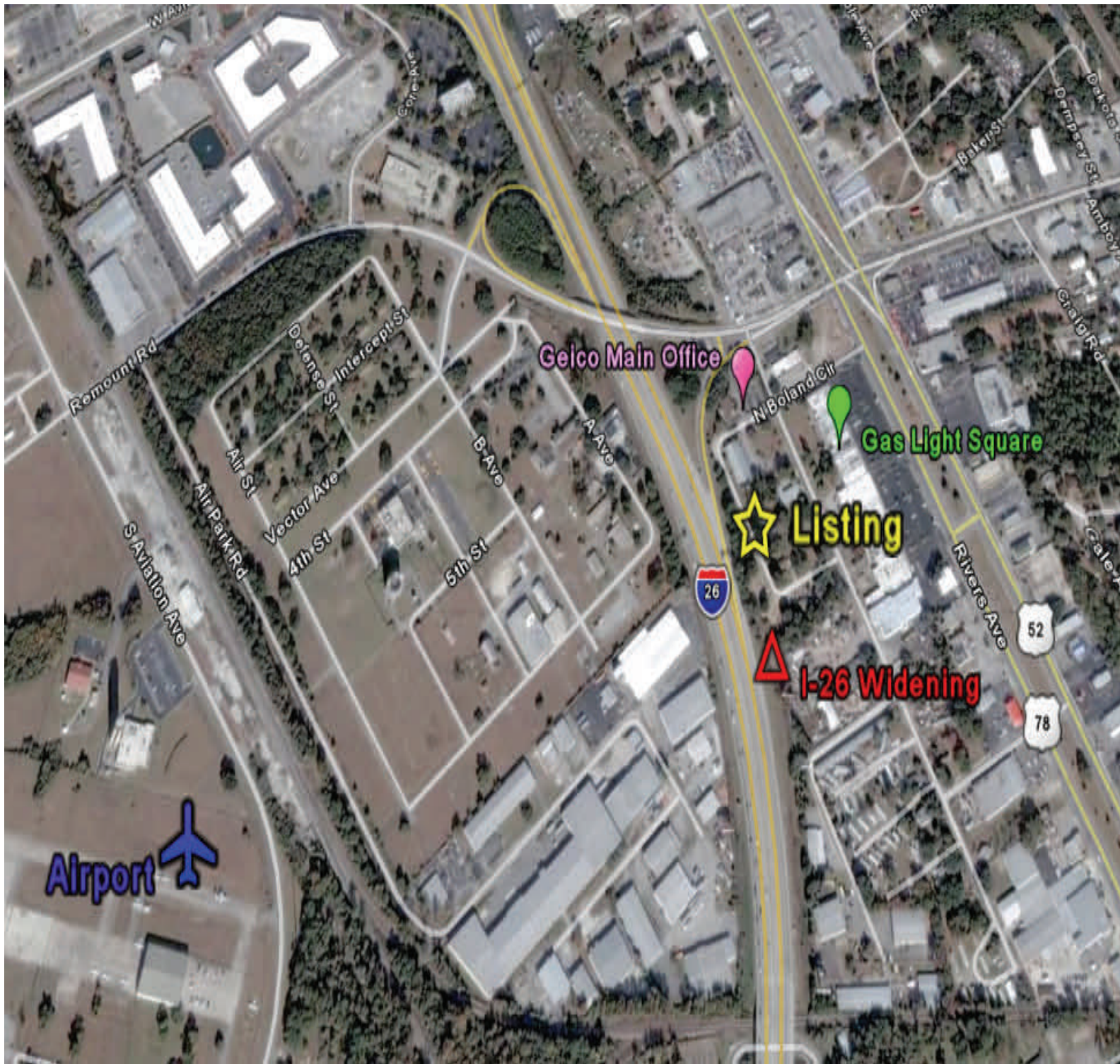
Directions:

From Charleston take I-26 and exit on the Remount Road Exit, turn right onto Woodbine Avenue before you get to Rivers Ave. Take the next right at the Geico office onto Boland Circle, take the circle around and property will be on your left next to Target Mailing. Property is behind Gas Light Square Shopping Center on Rivers Ave (Hwy 52).



Commercial and Investment Real Estate
242 Mathis Ferry Road, Suite 200 Mt. Pleasant, SC 29464
(843) 884-8976 (843) 884-0177
www.howellandassociates.net

5630 W. Boland Cir. North Charleston, SC 29406



Commercial and Investment Real Estate
242 Mathis Ferry Road, Suite 200 Mt. Pleasant, SC 29464
(843) 884-8976 (843) 884-0177
www.howellandassociates.net

Disclaimer: The information provided in our listings has been obtained from various sources and is believed to be reliable. However, we make no warranty or guarantee as to its accuracy and it should be verified by purchaser or leases. Some information represents conditions at the time of the listing and is subject to change.